

# The Rok Ness Monster Rogaine

WARA Spring 12 Hour October 27, 2001

Incorporating the Paddy Pallin 6 Hour Schools Championship

*Paddy Pallin*



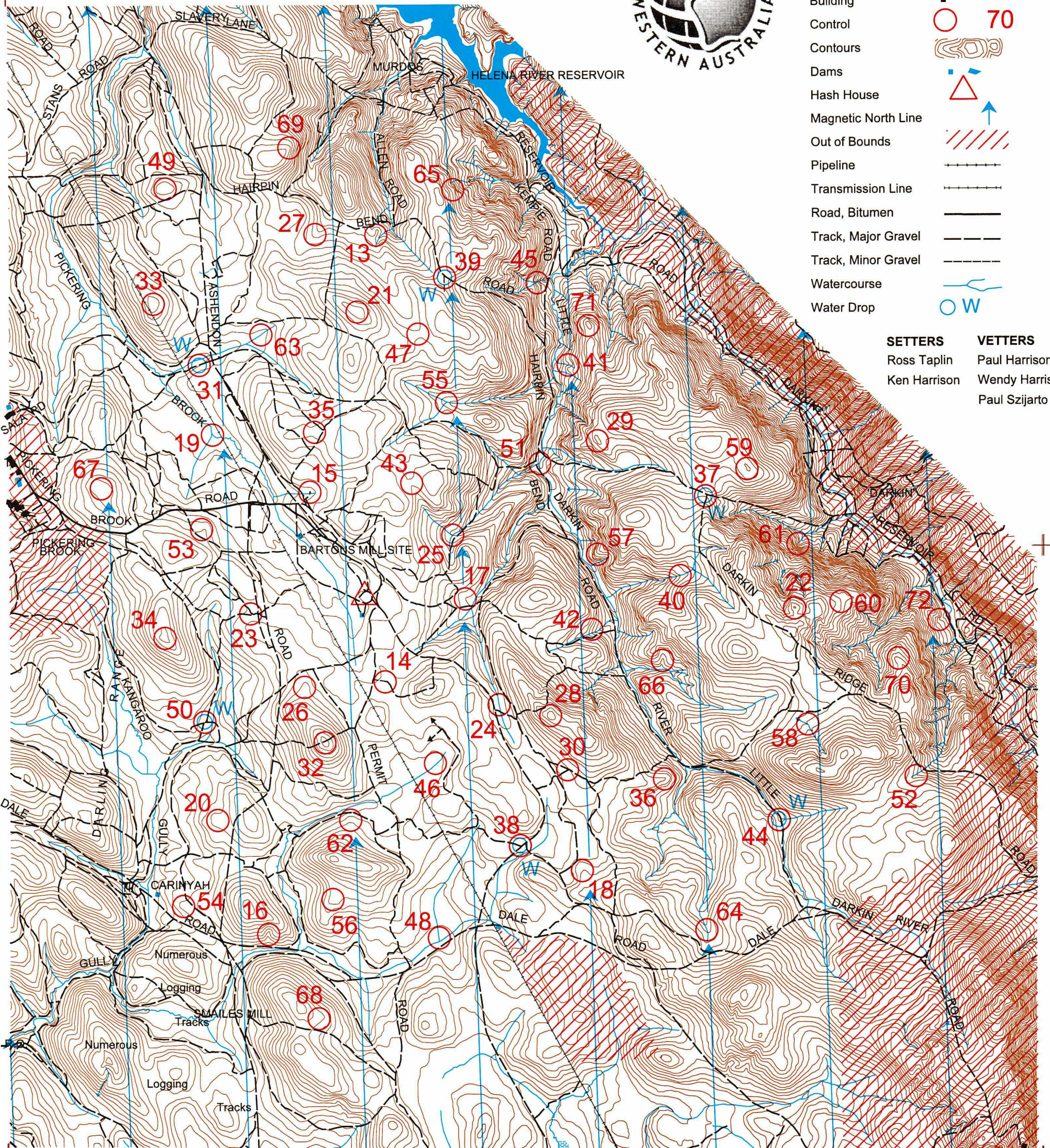
**LEGEND**

SCALE 1:50,000, 5 metre contour interval



- Building
- Control
- Contours
- Dams
- Hash House
- Magnetic North Line
- Out of Bounds
- Pipeline
- Transmission Line
- Road, Bitumen
- Track, Major Gravel
- Track, Minor Gravel
- Watercourse
- Water Drop

- | SETTERS      | VETTERS        |
|--------------|----------------|
| Ross Taplin  | Paul Harrison  |
| Ken Harrison | Wendy Harrison |
|              | Paul Szijarto  |



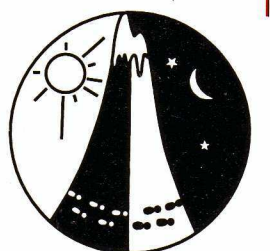
This map was produced using OCAD.  
Data supplied by DOLA and used under  
copy licence 393/93. Possession of this  
map does not give right of entry to this area.

Special thanks to the Department of  
Conservation and Land Management for  
land access permission, hash house site,  
and assistance with event planning.



Western Australian  
Rogaining Association  
PO Box 1201 Subiaco,  
WA 6904

[wa.rogaine.asn.au](http://wa.rogaine.asn.au)





# The ROK NESS Monster Rogaine

October 27, 2001

Control number	Description	Points
13	The knoll	20
14	The track	20
15	The watercourse	20
16	The gully	20
17	NE edge of small clearing	20
18	The spur	20
19	The creek junction	30
20	The broad spur	30
21	The broad knoll	30
22	The knoll	30
23	The track junction	30
24	The creek	30
25	The creek junction	40
26	The spur	40
27	The gully	40
28	The knoll	40
29	The knoll	40
30	The track junction	40
31	The track, WATER	50
32	The knoll	50
33	The knoll	50
34	The broad knoll	50
35	The broad spur	50
36	The spur	50
37	The track junction, WATER	50
38	The track junction, WATER	50
39	The saddle, WATER	50
40	The creek at a track junction	50
41	The gully	50
42	Eastern edge of a rocky clearing	50

Control number	Description	Points
43	The saddle, on a track	60
44	The creek junction, WATER	60
45	The creek junction, beside a 10m tor	60
46	The broad gully, on a tall, straight, dead tree	60
47	The saddle	60
48	The bend in the watercourse, north of a swamp	60
49	The knoll	70
50	The track junction, WATER	70
51	The creek junction	70
52	The gully	70
53	The broad spur	70
54	The broad spur	70
55	The creek junction, western edge of clearing	80
56	The spur	80
57	The spur	80
58	The bend in the watercourse	80
59	The broad knoll	80
60	NW edge of a large clearing	80
61	The gully, base of rock face	90
62	The broad spur	90
63	The watercourse	90
64	The watercourse	90
65	A rocky spur	90
66	The gully	90
67	The broad knoll	100
68	The broad spur	100
69	The spur	100
70	The spur	100
71	The knoll	100
72	The gully, eastern edge of rocky clearing	100

Important Information
<b>Control Cards</b> 9.30 am
<b>Briefing</b> 9.45 am
<b>Start</b> 10.00 am
<b>Finish</b> Schools' : 4.00 pm General : 10.00 pm
<b>Fruit Drop</b> 2.00 pm
<b>Hash House</b> Sat : 4.00 pm - 11.00 pm Sun : 7.00 am - 8.30 am
<b>Sunset</b> 6.37 pm
<b>Moon rise</b> 1.
<b>Number of Controls</b> 60
<b>Total Points</b> 3540

**Patrols** All water drops, Ashendon Road, Hairpin Bend Road, Dale Road